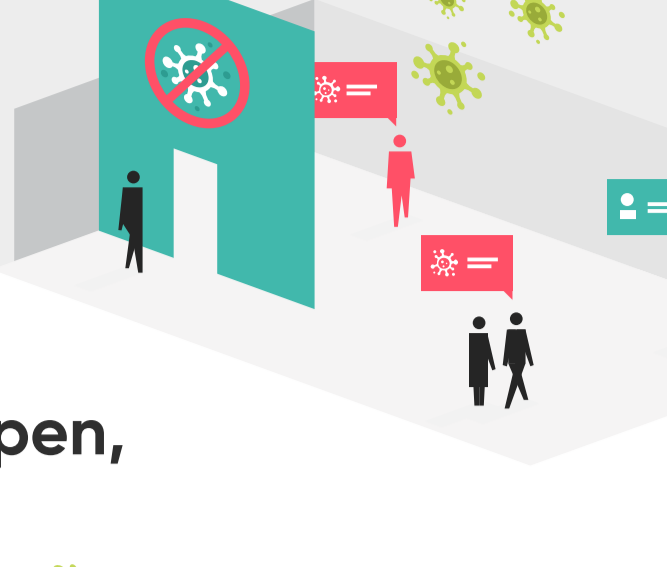


Impact Report.

— Employee Safety & Security Spotlight.

New research reveals the impact of COVID-19 on employee safety and security for back to work. Conducted in June 2020, Traction Guest surveyed 300 employees and 300 security and risk management professionals at enterprise organizations of >1,000 employees.



As physical workplaces reopen, employee concerns rise.

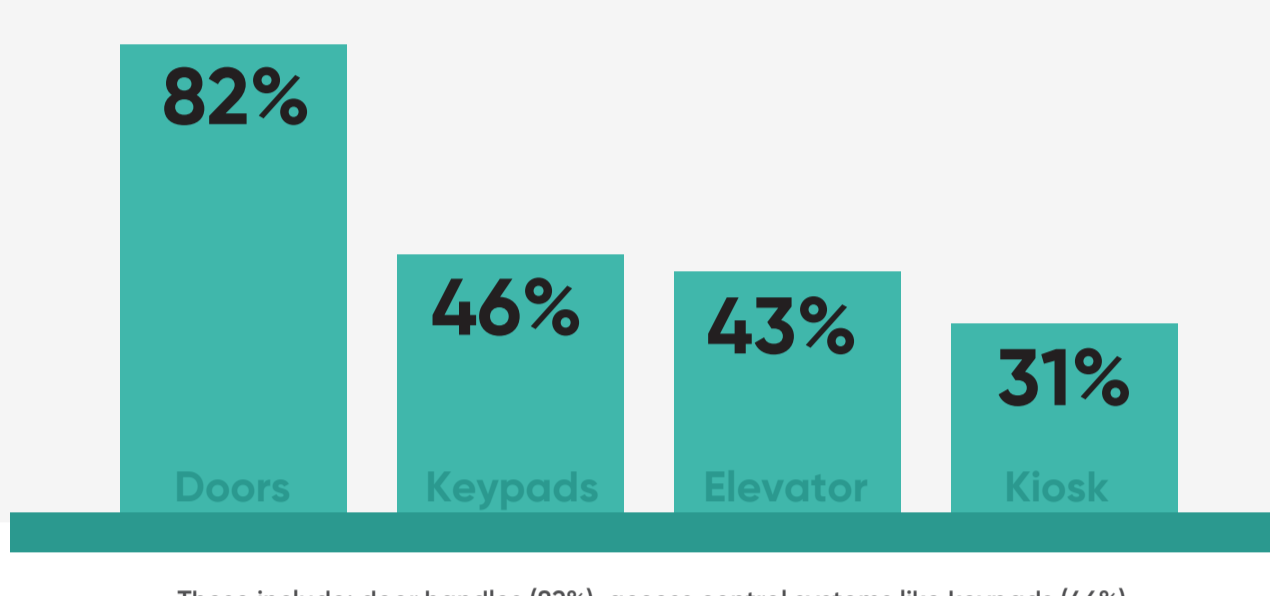
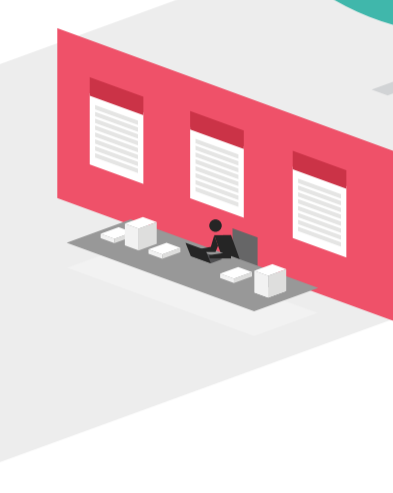
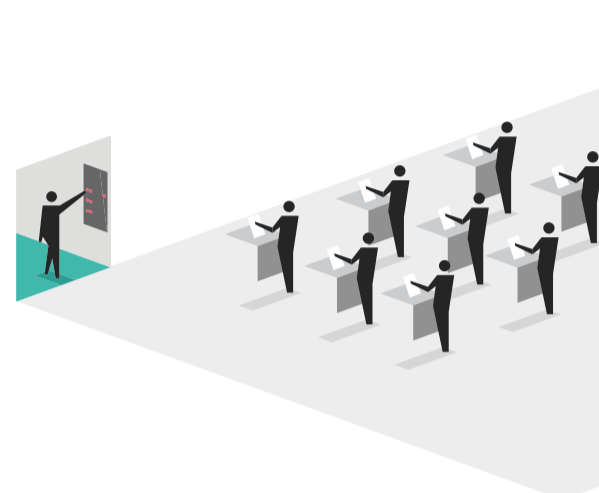
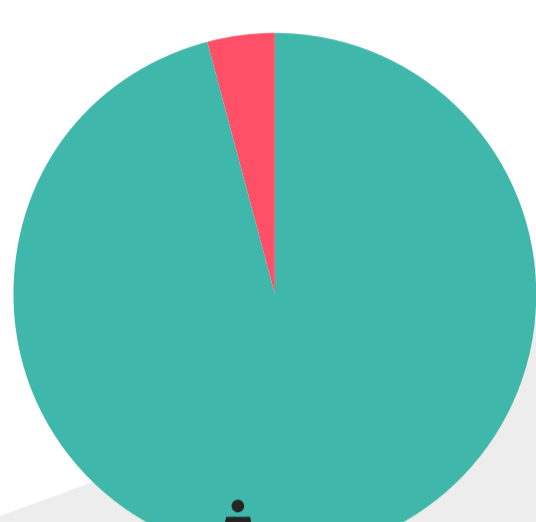


84% of employees are concerned about returning to the physical workplace for the remainder of 2020

85% of employees say health and safety in the workplace is a greater consideration now than before the pandemic

Most enterprises lack touchless technologies.

96% of employees still need to touch surfaces and devices to enter the workplace



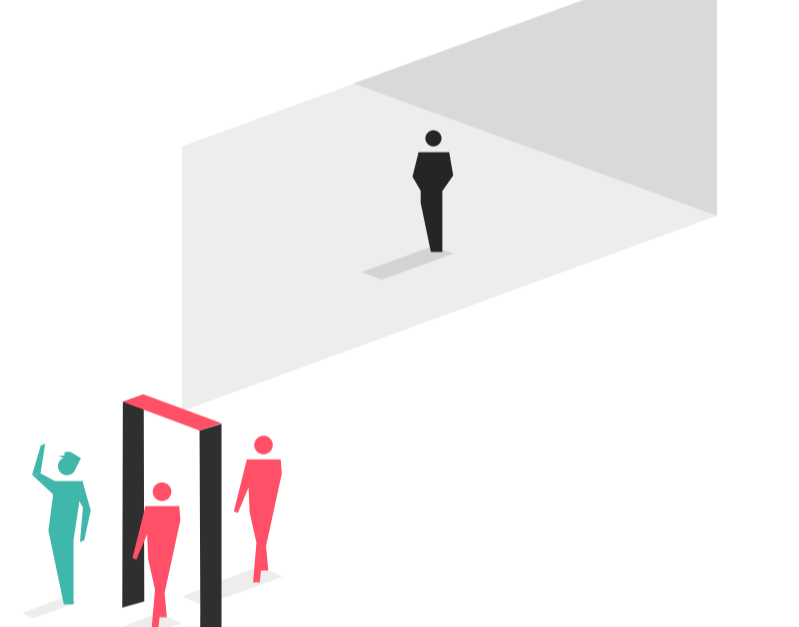
These include: door handles (82%), access control systems like keypads (46%), elevator buttons (43%), and sign-in devices or kiosks (31%)

Physical security is now a strategic imperative.



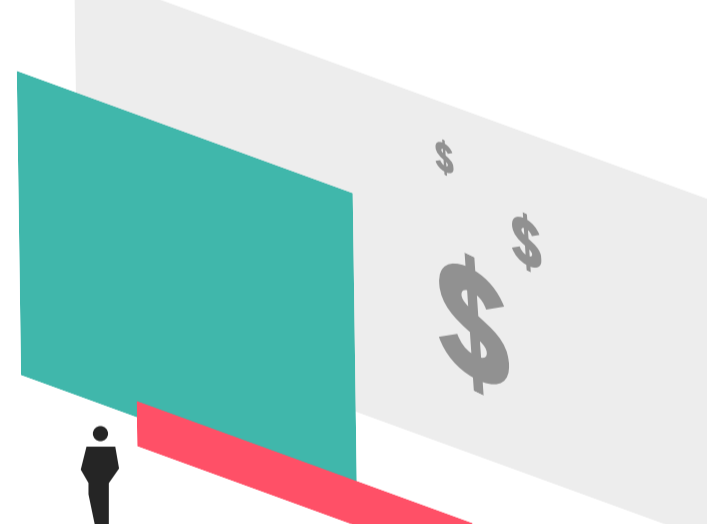
92% of professionals say physical security is of greater strategic importance now than it was before the pandemic

62% of respondents cited the frequency of interaction between C-level executives and the physical security function is higher than before COVID-19

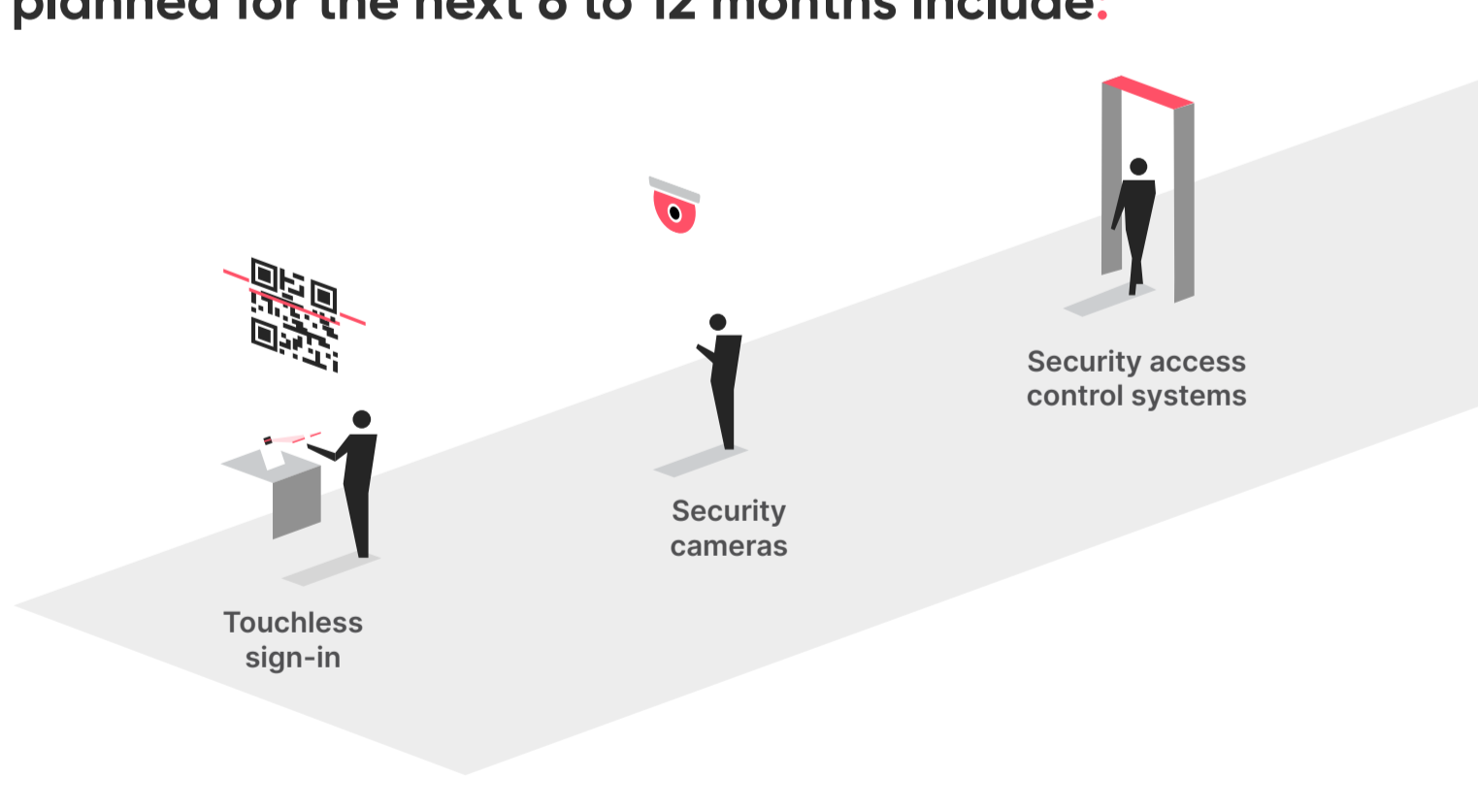


Physical security spending on the rise.

87% of companies plan to increase spending on physical security

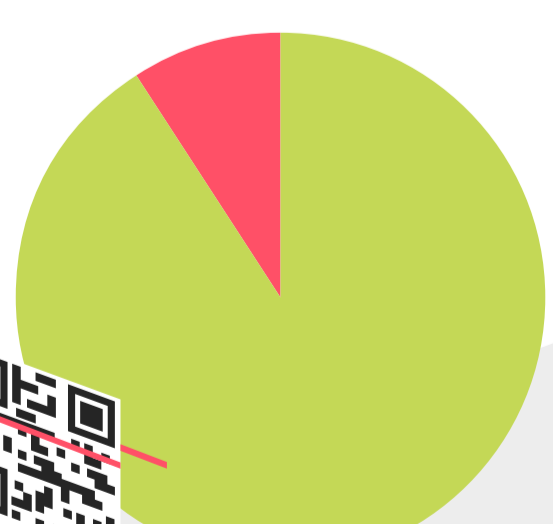


Three important physical security investments planned for the next 6 to 12 months include:



Touchless sign-in technology enables a safe return to work.

91% of companies currently offer or soon plan to offer touchless sign-in for their facility



For more information, check out the press release.

[Read more >](#)

